

# WEBB Air Disc Brake Rotors

High performance brake rotors from the brand you know and trust

## Webb LifeShield™ Advantage

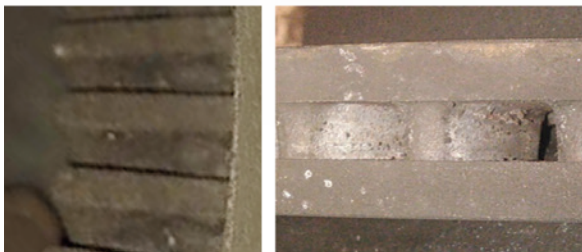
Webb offers a complete line of heavy-duty and severe-duty rotors for air disc brake applications. Select part numbers are offered with Webb's Unique LifeShield™ heat treatment process which creates an invisible protective layer across the entire rotor surface to help you fight corrosion and extend the product life cycle. Fleet testing shows 2x life, and longer product life means lower maintenance and operating costs. Contact your Webb sales professional today for additional information.



## Testing performed through TWO winters in the Salt Belt



26 months/32,789 miles WITHOUT Webb LifeShield™ protection



26 months/49,684 miles WITH Webb LifeShield™ protection



- Available for steer, drive, and trailer applications
- Webb rotors offer superior stopping power
- FMVSS-121 tested and certified on Webb's internal Link Dynamometer
- Lifetime warranty for workmanship defects
- Available through Webb's nationwide distribution partners
- Industry leading support
- Solid, dependable products from a trusted wheel-end supplier to the North American commercial vehicle industry for more than 65 years



[www.webbwheel.com](http://www.webbwheel.com)

Contact your local Webb Wheel Products supplier for training that can cut your operating costs!

A Marmon | Berkshire Hathaway Company

Scan this QR code to visit our website for product information, cross reference, and more.

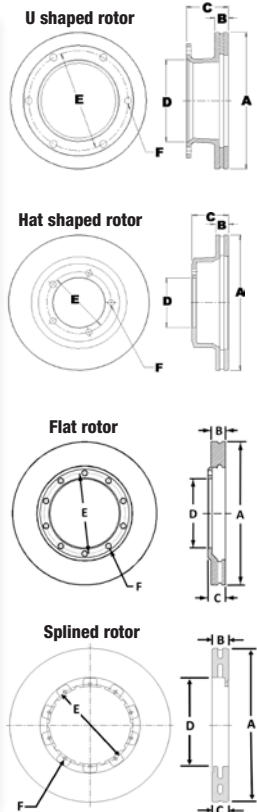


©2024 Webb Wheel Products Inc.  
January 2024 • SD-131-R32



# Webb ADB Rotor Dimensional Information

Webb Rotor Part Number	Brake Type	Weight	Rotor Type	A Overall Diameter	B Disc Thickness	C Overall Depth	D Pilot Diameter	E Bolt Circle Diameter	F Bolt Holes		Special Info
									No.	Size	
54220P	ADB	80	Hat	17.08	1.770	5.16	5.32	6.61	12	0.75	-
55030PK-65	ADB	40	U	12.80	1.340	5.85	6.65	7.71	8	M14 x 2	ABS, with corrosion protective coating
55031PK-65	ADB	59	U	14.86	1.770	5.91	8.66	9.82	10	M16 x 2	ABS, with corrosion protective coating
55032PK-65	ADB	77	U	16.93	1.770	5.91	8.66	9.82	10	M16 x 2	ABS, with corrosion protective coating
55035PK	ADB	71	U	16.34	1.690	5.91	8.66	9.82	10	M16 x 2	ABS
55040P	ADB	79	Hat	17.01	1.770	5.12	5.16	6.61	12	0.75	Available with Lifeshield™
55060P	ADB	80	U	17.08	1.770	5.65	8.50	10.50	10	5/8"-18 UNF	-
55070P	ADB	79	U	17.08	1.770	5.65	7.64	9.82	10	M16 x 2	Drilled/Tapped for ABS
55071PK	ADB	70	Flat	17.08	1.770	2.09	6.56	7.86	10	0.66	ABS, Steer Axle
55072PK	ADB	70	Flat	17.08	1.770	2.09	6.56	7.86	10	0.66	ABS, Drive Axle
55073PK	ADB	60	Flat	16.14	1.770	2.09	6.56	7.86	10	0.66	ABS, Steer Axle
55074PK	ADB	60	Flat	16.14	1.770	2.09	6.56	7.86	10	0.66	ABS, Drive Axle
55075P	ADB	82	U	17.24	1.750	5.64	7.64	9.82	10	5/8"-18 UNF	Drilled/Tapped for ABS
55080P	ADB	70	Hat	16.93	1.770	4.52	5.32	6.50	14	0.59	Available with Lifeshield™
55090P-65	ADB	83	U	16.93	1.760	5.91	8.66	9.82	10	5/8"-11 UNC	ABS, with corrosion protective coating
55097P-65	ADB	84	U	16.93	1.770	5.91	8.66	9.82	10	M16 x 2	ABS, with corrosion protective coating
55098P-65	ADB	85	U	16.93	1.770	5.91	8.66	9.82	10	M16 x 2	ABS, with corrosion protective coating
56020P	ADB	78	U	17.01	1.770	5.32	8.19	9.25	10	M16 x 1.5	Available with Lifeshield™
56022P	ADB	77	U	16.93	1.770	5.35	7.64	8.66	10	M16 x 1.5	Available with Lifeshield™
56024P	ADB	75	U	16.93	1.770	5.16	7.99	9.25	10	M16 x 1.5	Available with Lifeshield™
56025P	ADB	81	U	16.93	1.770	5.16	7.99	9.25	10	M16 x 1.5	ABS, Available with Lifeshield™
56026P	ADB	75	U	16.93	1.770	5.22	8.31	9.37	10	M14 x 1.5	Available with Lifeshield™
56050P	ADB	91	U	16.93	1.770	7.08	7.64	9.82	10	5/8"-18 UNF	ABS, Available with Lifeshield™
56089PK	ADB	67	Flat	16.93	1.770	2.26	7.08	8.07	10	0.59	ABS
56090PK	ADB	78	U	16.92	1.770	6.28	8.14	11.25	10	M16 x 1.5	Rotor pilots on flange OD
56091PK	ADB	68	Flat	16.92	1.770	2.09	6.56	7.87	10	0.66	ABS, Steer Axle
56092PK	ADB	68	Flat	16.92	1.770	2.09	6.56	7.87	10	0.66	ABS, Trailer Axle
56093PK	ADB	68	Flat	16.92	1.770	2.09	6.56	7.87	10	0.66	ABS, Drive Axle
56094PK	ADB	60	Flat	16.93	1.770	1.77	Spline	9.05	10	0.34	Spline Rotor, Available with Lifeshield™
56095P	ADB	78	U	16.92	1.770	5.91	8.66	9.82	10	5/8"-18 UNC	-
56096P	ADB	76	U	16.93	1.770	5.45	8.66	9.82	10	5/8"-18 UNC	-



Add "-99" suffix to Webb Rotor Part Number for Lifeshield option if available under "Special Info" column (example: 55040P-99).

## Webb ADB Rotor Interchange

Manufacturer Part Number	Webb Part Number	Manufacturer Part Number	Webb Part Number	Manufacturer Part Number	Webb Part Number	Manufacturer Part Number	Webb Part Number	Manufacturer Part Number	Webb Part Number
<b>ARVIN MERITOR</b>		<b>BENDIX (continued)</b>		<b>DURABRAKE (continued)</b>		<b>MAN (continued)</b>		<b>PREVOST (continued)</b>	
123547	55075P	K000332	56095P	71601	55031PK-65	81.50803.3040	55040P	611456	56022P
123642	55060P	K000758	56096P	75180	55030PK-65		<b>55040P-99</b>		<b>56022P-99</b>
123647	55070P		56024P	76601A	55075P	81.50803.0041	56020P	611457	56050P
3218-Z-1404	55075P	K021958	<b>56024P-99</b>		56022P		<b>56020P-99</b>		<b>56050P-99</b>
68326014	54220P		56050P	76603	<b>56022P-99</b>	81.50803.3041	56020P	621672	56050P
M44D6206	55090P	K021959	<b>56050P-99</b>		56050P		<b>56020P-99</b>		<b>56050P-99</b>
M44D71601	55031PK-65		56025P	76604	<b>56050P-99</b>	<b>MCI</b>		<b>SAF HOLLAND</b>	
M44D75180	55030PK-65	K035942	<b>56025P-99</b>	76606	55070P	A942.423.00.12	56026P	2019200000010	56089PK
	56022P	K038573	56096P	76607	56026P		56024P	51830036	56089PK
M44D76603	<b>56022P-99</b>	K038574	56095P		56024P	04-04-1107	<b>56024P-99</b>	<b>SETRA</b>	
	56050P	K069333	56020P	76612	<b>56024P-99</b>	15-02-1010	55070P	A9424230012	56026P
M44D76604	<b>56050P-99</b>	K069799	55040P	76613	55032PK-65	15-02-1043	54220P	A9424212112	56026P
	56024P	K110358	56095P		56020P	15-02-1067	54220P	<b>VAN HOOL</b>	
M44D76612	<b>56024P-99</b>	Z006407	55080P	76616	<b>56020P-99</b>	15-02-1081	56024P	11353913	56025P
M44D76613	55032PK-65		<b>55080P-99</b>	76617	56095P		<b>56024P-99</b>		<b>56025P-99</b>
M44D76617	56095P	<b>CENTRIC</b>		76618	56096P	15-05-1010	55075P	N508030038	55040P
M44D76618	56096P	120.86017	56094PK	76619	55097P	<b>NABI</b>			<b>55040P-99</b>
M44D76641	55080P	<b>CONMET</b>		76621	55040P	6316229	55070P	N508030040	55040P
	<b>55080P-99</b>	10016195	56092PK		<b>55040P-99</b>	6333812	55070P		<b>55040P-99</b>
M44D76692	56094PK	10018609	56092PK	76624	55072PK	<b>NEW FLYER</b>		920924972	56024P
M44DH20682	56090PK	10020109	56090PK	76628	55071PK	6316229	55070P		<b>56024P-99</b>
		10020682	56090PK		55080P	6331333	56024P	<b>VOLVO/MACK</b>	
		10025445	56094PK	76641	<b>55080P-99</b>	6333812	55070P	21538404	56094PK
		10041006	56095P	76692	56094PK	6347297	55040P	<b>WABCO</b>	
		10041215	55073PK	<b>GILLIG</b>			<b>55040P-99</b>	CT826	55030PK-65
		10041216	55071PK	82-72789-00	56024P	6359347	56020P	CT832	55031PK-65
		10041217	55074PK		<b>56024P-99</b>		<b>56020P-99</b>	CT807	55032PK-65
		10041218	55072PK	<b>GUNITE</b>		6407925	56024P	1660363	55097P
		10080753	55060P	R6206M	55090P		<b>56024P-99</b>	<b>ZF</b>	
		10082074	56095P	<b>HENDRICKSON</b>			56020P	0501.316.953	56024P
		10082181	55060P	S-32193	56095P	N8884457	<b>56024P-99</b>		<b>56024P-99</b>
		10083923	56091PK	S-34172	55098P-65		56022P	4474.375.211	56024P
		10083924	56093PK	S-36661-1	56092PK		<b>56022P-99</b>		<b>56024P-99</b>
		10084199	56092PK	S-34471	55035PK	611300	55080P		
		10085621	56092PK	S-29152-17	56094PK		<b>55080P-99</b>		
		<b>DURABRAKE</b>		<b>MAN</b>		611188	56022P		
		56641	54220P		55040P	611455	<b>56022P-99</b>		
I139278F	<b>56025P-99</b>	56642	55060P	81.50803.0040	<b>55040P-99</b>		<b>56022P-99</b>		

NOTE: "P" suffix indicates the rotor is packaged for protection.  
 NOTE: "PK" suffix indicates the rotor is packaged for protection and hardware kit is included.  
 NOTE: "-65" suffix indicates the rotor has corrosion protective coating.  
 NOTE: "-99" suffix indicates the rotor is packaged for protection and features LifeShield™ protection for superior corrosion resistance and wear resistance.



www.webbwheel.com

Contact your local Webb Wheel Products supplier for training that can cut your operating costs!

A Marmon | Berkshire Hathaway Company

Scan this QR code to visit our website for product information, cross reference, and more.



©2024 Webb Wheel Products Inc. January 2024 • SD-131-R32

